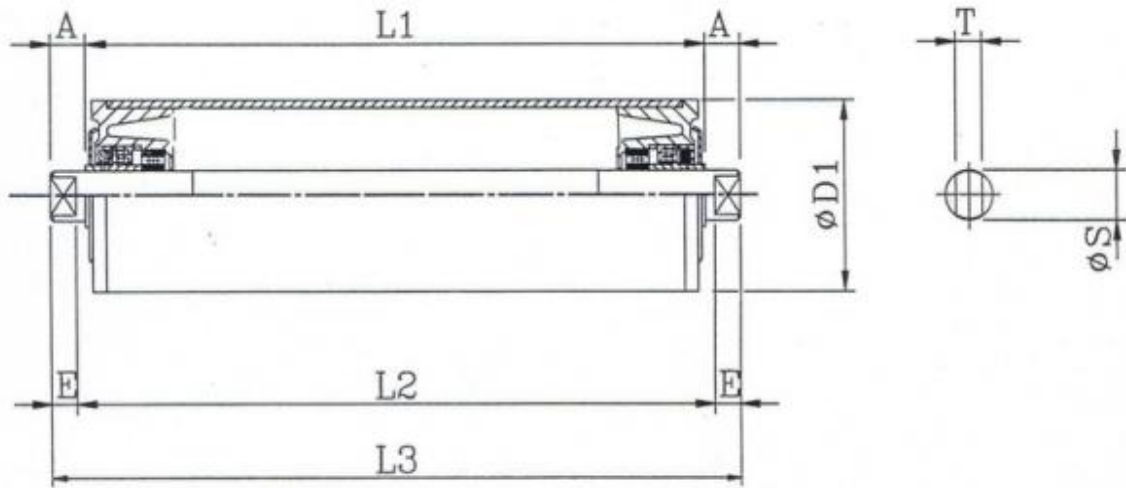


## POLYMER CAP CARRIER ROLLER

VC-P-S, VC-P-PVC, VC-P-HDPE



| ITEM       | CARRIER ROLLER |           |            |     |     |    |    |    |    | BEARING NO.     |
|------------|----------------|-----------|------------|-----|-----|----|----|----|----|-----------------|
|            | BELT           | ROLLER    | DIMENSIONS |     |     |    |    |    |    |                 |
|            | WIDTH          | D1        | L1         | L2  | L3  | A  | E  | S  |    |                 |
| VC-400-CR  | 400            | 60-89     | 145        | 153 | 175 | 15 | 11 | 25 | 14 | 6205 ZZ /6004ZZ |
| VC-450-CR  | 450            | 60- 89    | 165        | 173 | 195 | 15 | 11 | 25 | 14 | 6205 ZZ /6004ZZ |
| VC-500-CR  | 500            | 60- 89    | 180        | 188 | 210 | 15 | 11 | 25 | 14 | 6205 ZZ /6004ZZ |
| VC-600-CR  | 600            | 76-89     | 210        | 218 | 240 | 15 | 11 | 25 | 14 | 6205 ZZ         |
| VC-750-CR  | 750            | 89-114    | 265        | 273 | 295 | 15 | 11 | 25 | 14 | 6205 ZZ         |
| VC-900-CR  | 900            | 89-114.   | 315        | 323 | 345 | 15 | 11 | 25 | 14 | 6205 ZZ         |
| VC-1050-CR | 1050           | 114-139.8 | 370        | 380 | 410 | 20 | 15 | 25 | 18 | 6205 ZZ         |
| VC-1200-CR | 1200           | 114-139.8 | 420        | 430 | 460 | 20 | 15 | 25 | 18 | 6205 ZZ         |